

NanoManipulator


This support note shows how to connect WSxM and 3rdTech NanoManipulator in order to have both programs working together.

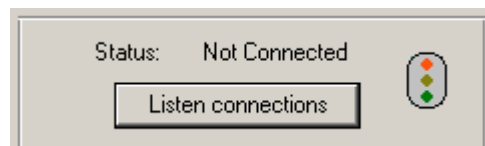
Introduction


WSxM can work together with [3rdTech Nanomanipulator](#) software. Nanomanipulator is a software developed by [3rdTech](#) that gives you the possibility to interact with the sample 'feeling' the surface with a haptic interface. Also you can control the tip motion to perform modifications and view your data in 3D while you are acquiring.

Connecting to NanoManipulator

You can connect to NanoManipulator whenever you want to in the data acquisition part of the WSxM software. All you have to do is:

1. In WSxM check the NanoManipulator button on the acquisition toolbar  if it is unchecked in order to see the NanoManipulator dialog bar:





2. Push the button  from the NanoManipulator dialog bar, you will see the light of the semaphore changing from red to yellow which means that WSxM is waiting for NanoManipulator to connect.

3. In NanoManipulator connect to WSxM choosing 'Open SPM connection...' from File menu (see NanoManipulator manual for more details).




At this time you will see the light of the semaphore green, WSxM and NanoManipulator are connected successfully.

Disconnecting from NanoManipulator

You can disconnect WSxM from NanoManipulator whenever you want to, just push the button . You will see the light of the semaphore turning red meaning WSxM is disconnected.

If you disconnect from NanoManipulator side before pushing  button, going to File menu and choosing 'Close...', you will see the semaphore changing to yellow. Then you can disconnect pushing 'Ignore connections' button the same way as above.

Semaphore light description

	WSxM and NanoManipulator are disconnected.
	WSxM is waiting for NanoManipulator to connect.
	WSxM and NanoManipulator are connected.



Nanotec
ELECTRÓNICA

Madrid Science Park
Pabellón C. Campus UAM
Cantoblanco
E-28049 Madrid
P: (34) 912 073 436
F: (34) 912 073 437
Email: nanotec@nanotec.es
WWW: www.nanotec.es
14/05/2003